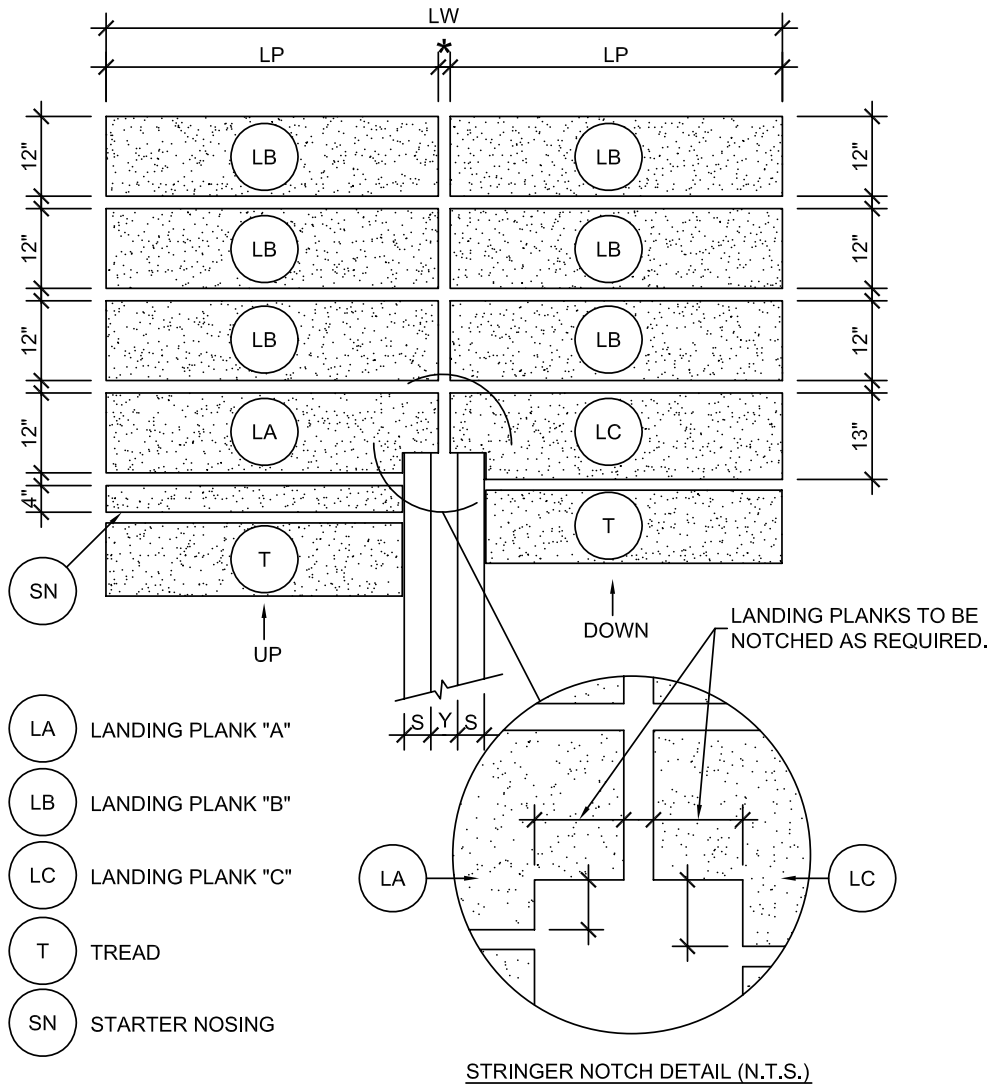


FILE: STP-0.1-12a
REV: 01.11.06

MAXIMUM "CLOSED RISER" TREAD FREE SPAN IS 60"
MAXIMUM "OPEN RISER" TREAD FREE SPAN IS 60"
MAXIMUM LANDING FREE SPAN IS 60"



180° LANDING

SCALE: N.T.S.
FILE: STP-0.1-12a